

**lumenpulse™**



**Leading the Way**  
Bridges + Infrastructure





**Jacques-Cartier Bridge**

Montreal, Quebec, Canada

Lighting-Concept: Moment Factory

Lighting-Consultants: Ambiances Design Productions, ATOMIC3

Éclairage Public/Ombrages, Lucion Média, Réalisations, UDO Design

Photographer: The Jacques-Cartier and Champlain Bridges Incorporated





# Getting You There

Our end-to-end design ownership means our luminaires work in unison, across product families, so landscape designers, lighting designers, architects, and city planners can create a consistent aesthetic across multiple applications. Read on to learn of all the ways Lumenpulse is committed to lighting bridges and infrastructure.

Seeing to Tomorrow	4
A Source of Pride	6
The Road to Success	8
Proudly North American	10
We Build to Last	12
System Validation	14
Manufacturing Execution System	18
System Validation	20
Control Ready	24
Every Step of the Way	38

Cover Image  
**Veterans' Glass City Skyway**  
Toledo, Ohio, United States  
Lighting Design: Horton Lees Brogden  
Photographer: Feinknopf Photography

**Denver Airport Transit Center**  
Denver, Colorado, United States  
Lighting Design: SNAIK Atelier  
Yann Kersalé Light Art  
Photographer: Ryan Linton





**Lumenpulse Headquarters**  
Longueuil, Quebec, Canada  
Architect: Lemay  
Photographer: Stéphane Brügger

## Seeing to Tomorrow

Founded in 2006 in Montreal, Canada, our people proudly design, manufacture, and promote lighting solutions. We focus on the intersection of market needs and innovate accordingly using research and technology. Our products and systems always deliver peace of mind and exceed the expectations of both our customers and shareholders. Lumenpulse's vision is to empower the specification lighting community with differentiated solutions that transform lighting challenges into simple, innovative, architectural masterpieces.

Our vision is the foundation of our expertise in illuminating bridges and infrastructure. Our decades of earned industrial and technological knowledge, proven by multiple bridge and infrastructure projects the world over, has given us a reputation for luminaires that are adaptable to numerous applications, have outstanding lifetimes, and an unmatched quality of light.





**Two Rivers Park Bridge**  
Little Rock, Arkansas, United States  
Engineer: Garver LLC  
Photographer: Mike Anderson

## A Source of Pride

The design and manufacturing of highly dependable outdoor luminaires is a distinguished and vital endeavour. The architectural and decorative lighting of bridges and infrastructure not only increases their visibility, accessibility, and functionality; it creates civic pride.

Lumenpulse has long been committed to researching, developing, and implementing technologies to make this world a brighter, more energy-efficient place. Bridges and infrastructure are essential spaces that need not be merely functional; they can inspire, excite, and move us. It is for these reasons that we at Lumenpulse take great pride in our outdoor luminaires.



Port of Montreal's Grand Quai and Cruise Terminal  
Montreal, Quebec, Canada  
Architects: Provencher\_Roy  
Photographer: Stéphane Brügger

# The Road to Success

Creating luminaires that successfully weather the elements while maintaining an excellent quality of light is what we do. Our family approach to lighting design means all of our product families can be used in unison across several applications while maintaining a unified aesthetic. Our products are control agnostic, which means you take control, and anything is possible.

## Sustainable Design

Sustainable industrial design that allows for wearable parts to be replaced. All products are backed by a 5-year warranty.

## Family Approach

Scalable families of products that ensure visual consistency across applications.

## Quality of Light

Sources that offer outstanding longevity, a consistent colour temperature over time, and best-in-class performance.

## Control Ready

Innovative control technologies that are control agnostic and work with standard control protocols.

## Dynamic Solutions

A variety of optics, colours, accessories, and finishes, promoting greater adaptability and freedom.

## Ease of Installation

Designed with a fluid compatibility and numerous mounting options that save time and money.







Lumenpulse Headquarters  
Longueuil, Quebec, Canada

## Every Step of the Way

We assemble all of our luminaires at our facilities in North America. We oversee every aspect of their production to uphold our commitment to their quality. Every step we take is a step towards bringing you a world-leading luminaire. We take pride in our products and stand behind them every step of the way.



# We Build to Last

We design, test, and manufacture our luminaires to brave the elements. We guarantee them to stand tall during harsh conditions, be it the relentless vibration of a bridge or years of sea spray, they will endure. Our commitment to low-maintenance, long lifespan luminaires for extreme outdoor use is unfailing.



The Lumenfacade Lumenseal guarantees that 100% of our exterior fixtures are tested for infiltration before leaving our production floor.





**High Level Bridge**  
Edmonton, Alberta  
Lighting Design: Prolux Lighting  
Photographer: Ian Grant



### Weather or Not

Your infrastructure has been engineered to handle whatever weather is thrown at it. So are our luminaires. To ensure their dependability, our IP66-rated fixtures are sealed and tested at our facility.



### To the Nth Degree

We've put our luminaires to the test, given them the Nth degree so they can handle any fluctuation of degrees. With operating temperatures of -25 °C to 50 °C the weather is irrelevant.



### Good Vibrations

Structural vibration is not something you need to worry about; we offer a choice of luminaires that meet the 3G ANSI C136.31 vibration standard for bridge applications.



### Corrosion Resistant

Seaspray, chemicals, the extreme outdoors, you name it, and our luminaires resist it. Being ready for hostile environments is par for the course when it comes to a long life with low maintenance outdoors.



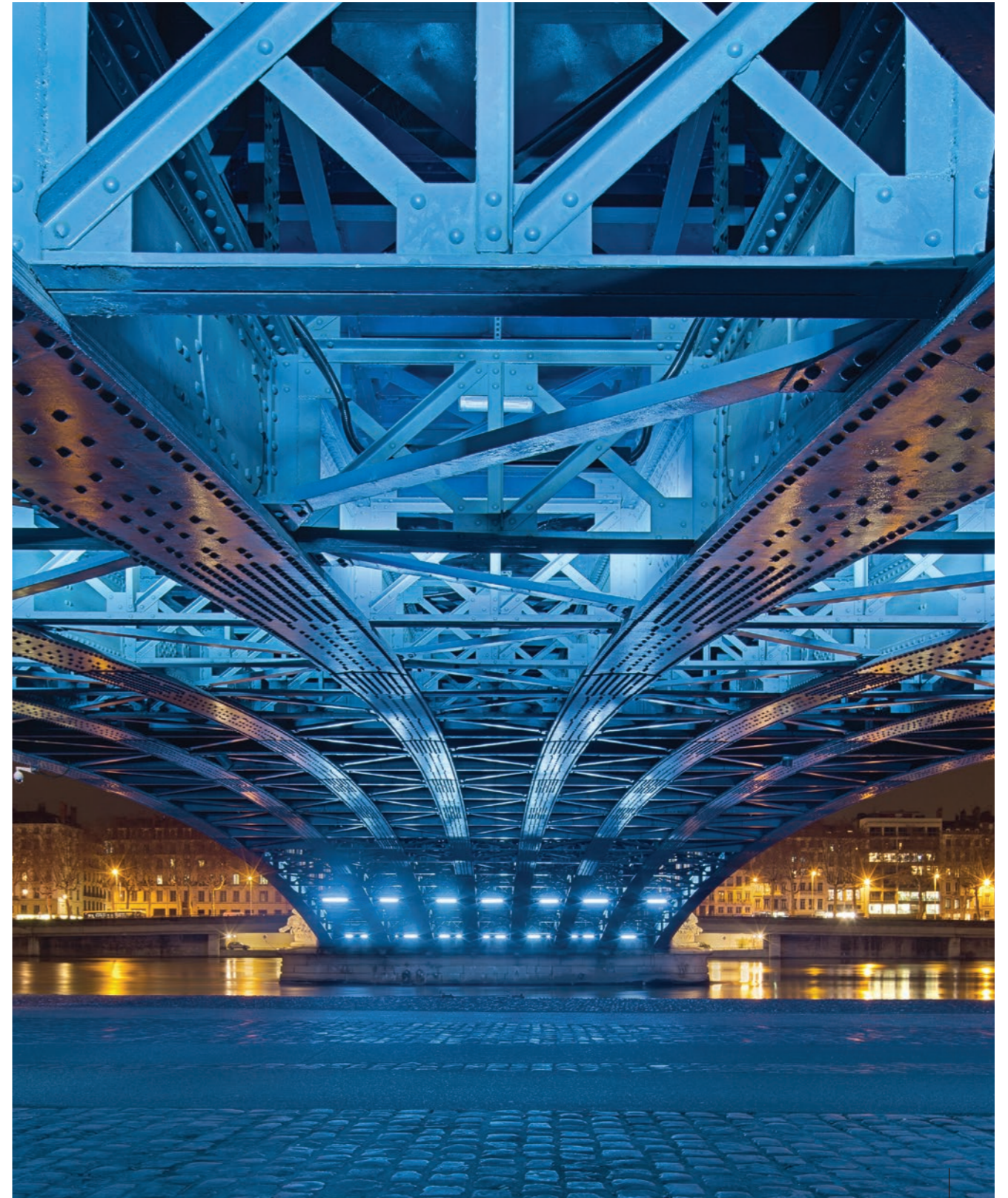
### Live Long and Prosper

Made from architectural-grade materials with lifetimes from 79,000 up to 370,000 hours lumen maintenance (L70 at 25 °C) and a standard, five-year warranty.





Memorial Bridge  
Portsmouth, New Hampshire, United States  
Lighting Design: Light Time in Space  
Photographer: Aaron D. Priest



Lafayette Bridge  
Lyon, France  
Photographer: Xavier Boymond





# Manufacturing Execution System

Lumenpulse's manufacturing execution system (MES) ensures the effective execution of all our manufacturing operations. It ensures that the exact product we have designed is consistently produced to our stringent requirements. MES connects, monitors, and controls all critical steps during our assembly process. Each product's assembly is monitored, and each product is individually tested throughout production.

Our use of MES assures that work instructions and manufacturing steps are carried out correctly by each of our operators. This begins with an order's release up until the finished product is shipped. Lumenpulse's MES focusses on the following steps:

- Work Instructions
- Integrated Testing
- Traceability
- Reporting
- Shop Floor Control



# System Validation

Lumenpulse uses System Validation to check the compliance of every element in each of our products. The validation process is not limited to a phase at the end of a product's assembly; it occurs at the end of each milestone throughout the assembly process. This helps us to guarantee that each one of our products will stand the test of time once they are in the field.

As part of System Validation, Lumenpulse can offer clients the option of Factory Acceptance Tests (FAT) to live test runs of systems in-house before they are placed in the field. Such testing ensures that controls and luminaires are ready before being placed on the project site.







**The Memorial Avenue Gateway Bridge**

Christchurch, New Zealand

Lighting Design: energylight + Lighting Design Partnership

Photographer: Jason Mann





# Control Ready

There should be no lighting without lighting control. Our luminaires are compatible with multiple control systems. Take control using DMX/RDM, Ethernet, or use our innovative Lumentalk technology to enable digital control over your existing AC wiring.

 **DMXrdm**

**ETHERNET**

**lumen**  **talk™**

---

**Riverside Bridge**  
Toronto, Ontario, Canada  
Architect: Mulvey + Banani International Inc.  
Photographer: David Giral





New Haven, Connecticut, United States  
 Lighting Design: Brandston Partnership, Inc.  
 Photographer: Brett Beyer



# Pearl Harbor Memorial Bridge

Remote Device Management (RDM) is an enhancement of DMX, allowing full bi-directional control and communication for simple, convenient commissioning. With RDM, luminaires on the Pearl Harbor Memorial Bridge can communicate important information, such as their address, status, temperature, and predicted lifetime expectancy. They can also be updated or re-commissioned at any time with a simple click.

#### Products used:

- 52 x Lumenbeam Extra Large RGB
- 16 x Lumenbeam Large RGBW
- 356 x Lumenfacade Large RGB
- 1 x LumenID
- 1 x Pharos controller.

#### What DMX/RDM did for the Pearl Harbor Memorial Bridge:

- The DMX/RDM controls simplified the discovery of any RDM-enabled device on the network, creating an easy-to-commission lighting design
- With RDM/DMX, the features of each fixture can be re-discovered, updated, or re-commissioned at any time – without having to climb a ladder
- The RDM-enabled fixtures on the bridge feedback important information, including DMX addresses, parameters, descriptions, and temperature
- The error alert system reports potential issues, including "Over Temperature" and "Over Voltage."



Montreal, Quebec, Canada  
Lighting Concept: Moment Factory  
Lighting Consultants: Ambiances Design Productions, ATOMIC3,  
Éclairage Public/Ombrages, Lucion Média, Réalisations, UDO Design  
Photographer: The Jacques-Cartier and Champlain Bridges, Inc.

ETHERNET

## Jacques-Cartier Bridge

The smart Ethernet-enabled products in the Lumenpulse portfolio allowed the Jacques-Cartier Bridge illumination to leverage the many advantages of this modern networking technology, delivering convenience, performance, and flexibility to this epic undertaking.

### What Ethernet did for the Jacques-Cartier Bridge:

- The commissioning of Ethernet on the Jacques-Cartier Bridge is cost-effective and easy to operate and is fastest than all other control options
- The Ethernet cables (CAT5e) are inexpensive and easily sourced
- The RJ45 connectors are universal, reliable, keyed, and latching, with cables that can be cut to length and terminated in the field with simple tools
- The Ethernet networks are easily bridged into other networks. This enables many different scenarios, such as mixing wired and wireless networks to reach places where it may be difficult to pull cable.







Duluth, Minnesota, United States  
Lighting Design: Short Elliott Hendrickson, Inc.  
Photographer: James Kruger

# John A Blatnik Bridge



Lumentalk technology was used to bring LED lighting to the Blatnik A Bridge, saving the installation of new conduits, cables, and labour. The new lighting system reduced energy usage by 60%, increased flexibility, and simplified maintenance.

### How Lumentalk solved it:

- Converted DMX data so it could be sent over AC wiring across a bridge that is 2,431 meters long
- Reduced energy usage by 60%
- Saved thousands of dollars on new data cables and control boxes.

### What was required:

- 90 x Lumentalk-enabled luminaires
- 1 x Lumenlink
- 1 x Lumentranslator 2
- 1 x Pharos controller.

### What was not required:

- Thousands of feet of new data wiring
- Hours of additional labour
- Months of disruptive construction and bridge closures
- Additional conduits
- The installation of control boxes.





Beziers, France  
 Lighting Design: LUMINOcité  
 Photographer: Technilum – Hugo Da Costa

## Fonseranes Locks

The DMX/RDM network used for the Fonseranes Locks helps the Lumenbeam luminaires to provide colour-changing light that is commissioned precisely to respect the surrounding dark of night.

### Products used:

- 17 x Lumenbeam Large Colour-Changing (RGBW), Narrow 10° Spot
- 5 x Lumenbeam Large Colour-Changing (RGBW), Narrow 20° Flood
- 8 x Lumenbeam Grande Colour-Changing (RGBW), Narrow 10° Spot
- 1 x Lumenbeam Medium Colour-Changing (RGBW), Narrow 10° Spot
- 1 x Pharos Control System.

### What DMX/RDM did for the Fonseranes Locks:

- DMX/RDM-enabled fixtures are a low-cost alternative to other control options allowing more lighting design for less
- The DMX/RDM controls greatly decreased the number of home runs to the control room, this, in turn, decreased the cabling and conduit costs
- The use of DMX/RDM controls requires minimal hardware and simple software configuration, creating a straight-forward, user-friendly way to control a lighting design.



San Francisco, California, United States  
Lighting Design: Lighting Systems, Inc.  
Photographer: Dean J Birinyi



## Castro Street

Lumentalk enlivened San Francisco Castro Street's Business District with colour-changing, digitally programmed LEDs without having to tear up the street.

### How Lumentalk solved it:

- Converted DMX data so it could be sent over AC wiring
- Made colour-changing possible
- Saved thousands of dollars, not digging cables and control boxes.

### What was required:

- 48 x Lumentalk-enabled luminaires
- 1 x Lumenlink
- 2 x Lumentranslator 2
- 1 x Lumentouch 2.0.

### What was not required:

- Thousands of feet of new data wiring
- Hours of additional labour
- Complicated building permits
- Months of disruptive construction.







**The CHUM Footbridge**  
Montreal, Quebec, Canada  
Lighting Design: NEUF Architect(e)s  
Photographer: Cannon Design



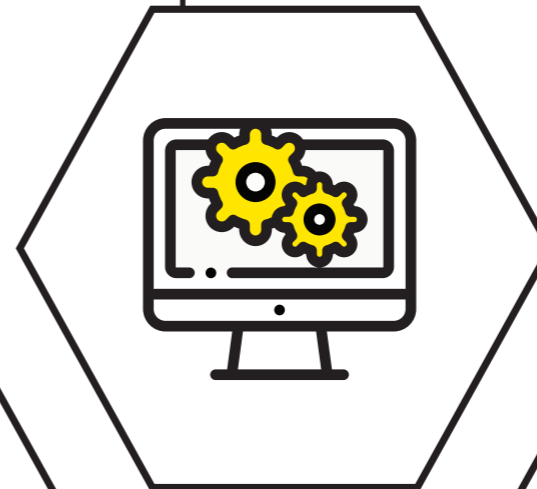
## Support Team

Every one of our luminaires comes with a team of experts behind it. If it's commissioning you need, we're there for you. If you need demonstrations, we're there for you. If you need project management, yes, we're there for you. Our products come with much more than a guarantee, they come with expertise.



## Application Engineering

To ease and ensure your project's success, we offer fixture and application assistance, verification through Photometric studies, control system consultation and quotation, control box placement consultation, schematic wiring diagrams to aid in installation, as well as mockup assistance from our photometric technicians and sales engineers.



## Commissioning

A Lumenpulse Field Service Technician is available to work directly onsite with the electrical contractors, system users, and the system maintenance team to provide a pre-wire visit, onsite commissioning, onsite programming, and system training. Commissioning and programming are here to give end-users peace of mind, knowledge, and assurance.

Every Step of the Way





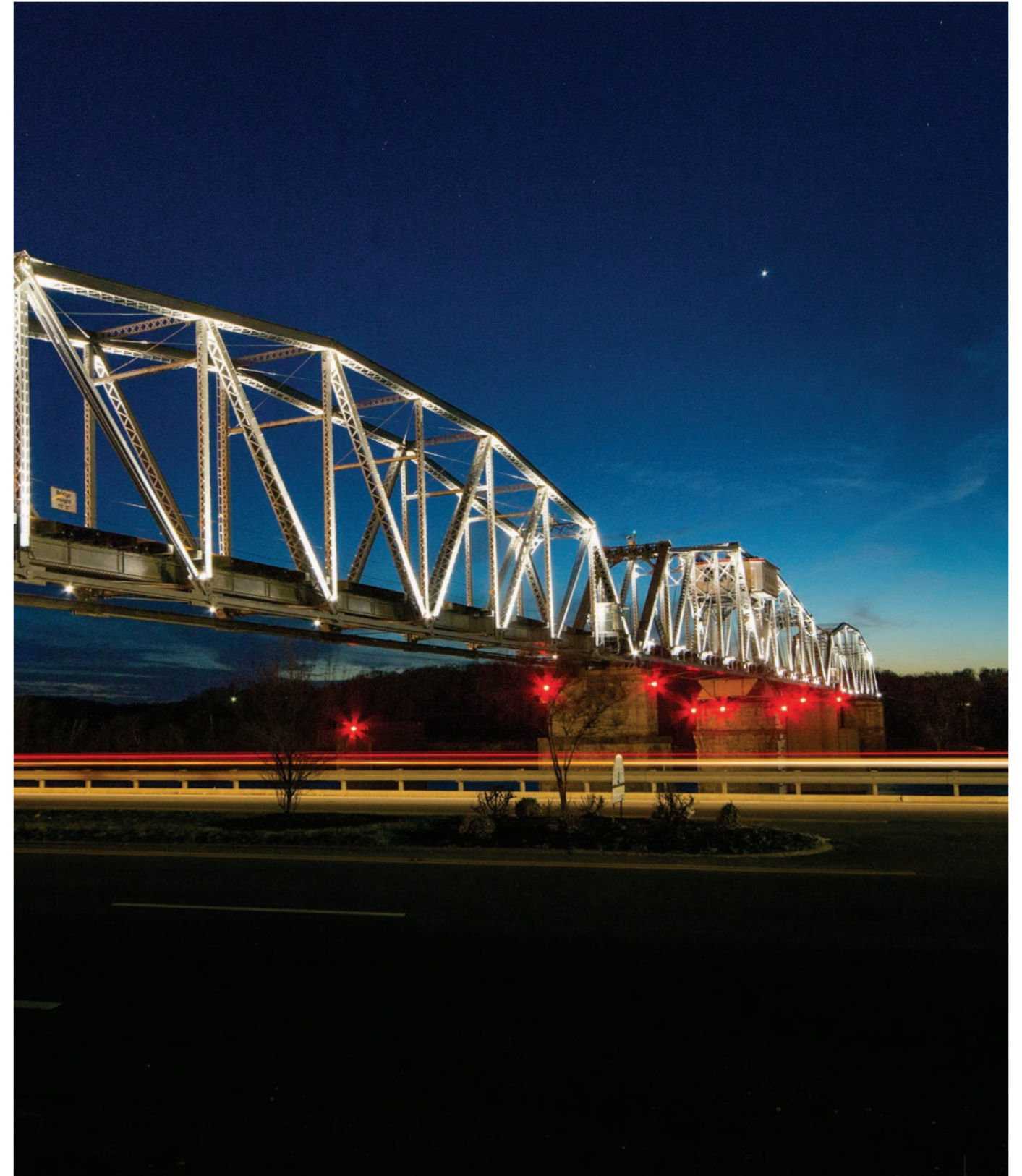
**The Caille Bridges**  
Cruseilles, France  
Lighting Design: Les Eclairagistes Associé  
Photographer: Xavier Boymond



**Samuel-De Champlain Bridge**  
Montreal, Quebec, Canada  
Lighting Design: Horton Lees Brogden Lighting Design  
Photographer: Feinknopf Photography, Lauren K. Davis



**Cabrillo Bridge**  
San Diego, California, United States  
Lighting Design: Illumination Arts  
Photographer: Steve Lerum



**RJ Corman Railroad Bridge**  
Clarksville, Tennessee, United States  
Lighting Design: Tennessee Lighting Sales  
Photographer: Joseph Hilliard



Sölvesborg Bridge  
Sölvesborg, Sweden  
Lighting Design: Ljusarkitektur  
Photographer: Olof Thiel



Story Wall Eskilstuna  
Eskilstuna, Sweden  
Lighting Design: ÅF Lighting  
(Tobias Olsson, Francesco Guastella, Kai Piippo, Seren Dincel)  
Photographer: Tobias Olsson, ÅF Lighting





Sunrail Orlando  
Orlando, Florida, United States  
Lighting Design: TLC Engineering for Architecture  
Photographer: Joseph Hilliard

STAY BEHIND YELLOW





**Mersey Gateway Bridge**  
Runcorn, Halton, United Kingdom  
Lighting Design: Speirs + Major  
Photographer: James Newton



## Sales Offices and Manufacturing Facilities

### Corporate Headquarters

1220 Marie-Victorin Blvd.  
Longueuil, QC  
J4G 2H9 Canada

T +1.877.937.3003  
T +1.514.937.3003  
F +1.514.937.6289

### Paris, France

19 Vivienne  
75002 Paris  
France

T +33 (0)1 40 41 60 10

### Manchester, United Kingdom

4<sup>th</sup> Avenue, The Village  
Trafford Park, Manchester  
M17 1DB United Kingdom

T +44 (0) 161 872 6868  
F +44 (0) 161 872 6869

### Florence, Italy

Via della Chiesa, 38  
50041 Calenzano  
Firenze - Italy

T +39 055 541754  
F +39 055 541757 5

