

lumenpulse™

D **TW**

Dim to warm

Stay Warm.

Like the soft glow of a lit candle, warm white light creates a sense of intimacy and familiarity. Lumenpulse's Dim to Warm offers instant ambience, replicating the natural warmth of incandescent-style dimming, with modern performance and flexibility.



What is Dim to Warm?

Dim to Warm is an embedded Lumenpulse technology that reduces a luminaire's colour temperature when dimmed, allowing for smooth dimming of warm white light (from 2700K to 2200K). The technology was designed to replicate the familiar, natural feeling of dimmed incandescent, whilst providing modern performance and flexibility.

Lumenpulse Dim to Warm dimming curve compared to halogen



- Colour temperature warms as it dims
- Replicates dimmed incandescent
- Feels natural



100% Intensity
2700K

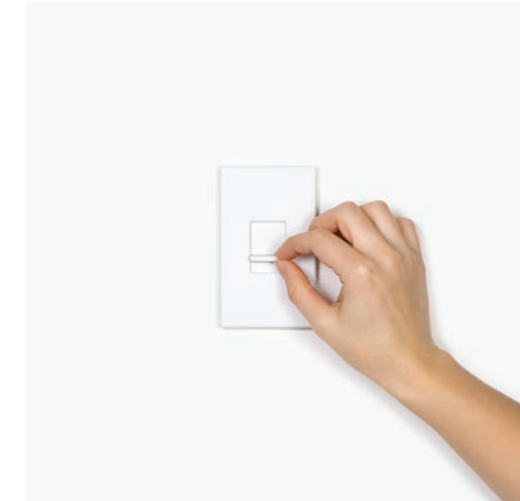


50% Intensity
2500K



10% Intensity
2200K

How Does Dim to Warm Work?



Dim to Warm uses a predefined dimming curve to simulate the natural dimming of an incandescent lamp – meaning not even the toughest restaurant critics will notice.

The technology requires no additional programming, allowing standard, existing 1-10V dimmers to provide sophisticated control and smooth, natural dimming. Dim to Warm technology is also compatible with standard DMX protocol, using only 1 channel.

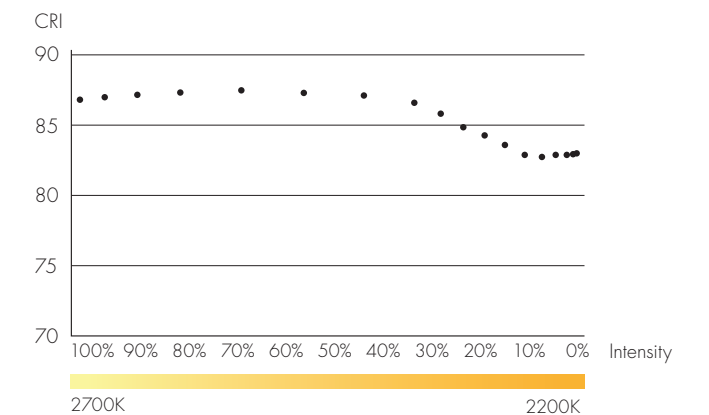
Ambience at your Fingertips

Sophisticated control and smooth, natural dimming – without additional programming.

High CRI,
No Matter the Intensity

Dim to Warm offers exceptional colour rendering consistency (above CRI 83+), ensuring that colours always look the way they should, even when luminaires are dimmed below 10%.

Colour rendering index in relation to light intensity



A Warm Ambience for Any Application

Bringing the House Down (and Back Up)

With 1-channel DMX control, Dim to Warm gives theatres instant, and easily dimmed, ambience.



A Friendly Face

Reception and waiting areas can provide a calming, friendly ambience at any hour by transitioning between warm colour temperatures.



Textured Facades

Use different colour temperatures to accentuate the character and colour of textured surfaces throughout the evening and night.

100% Intensity
2700K

10% Intensity
2200K

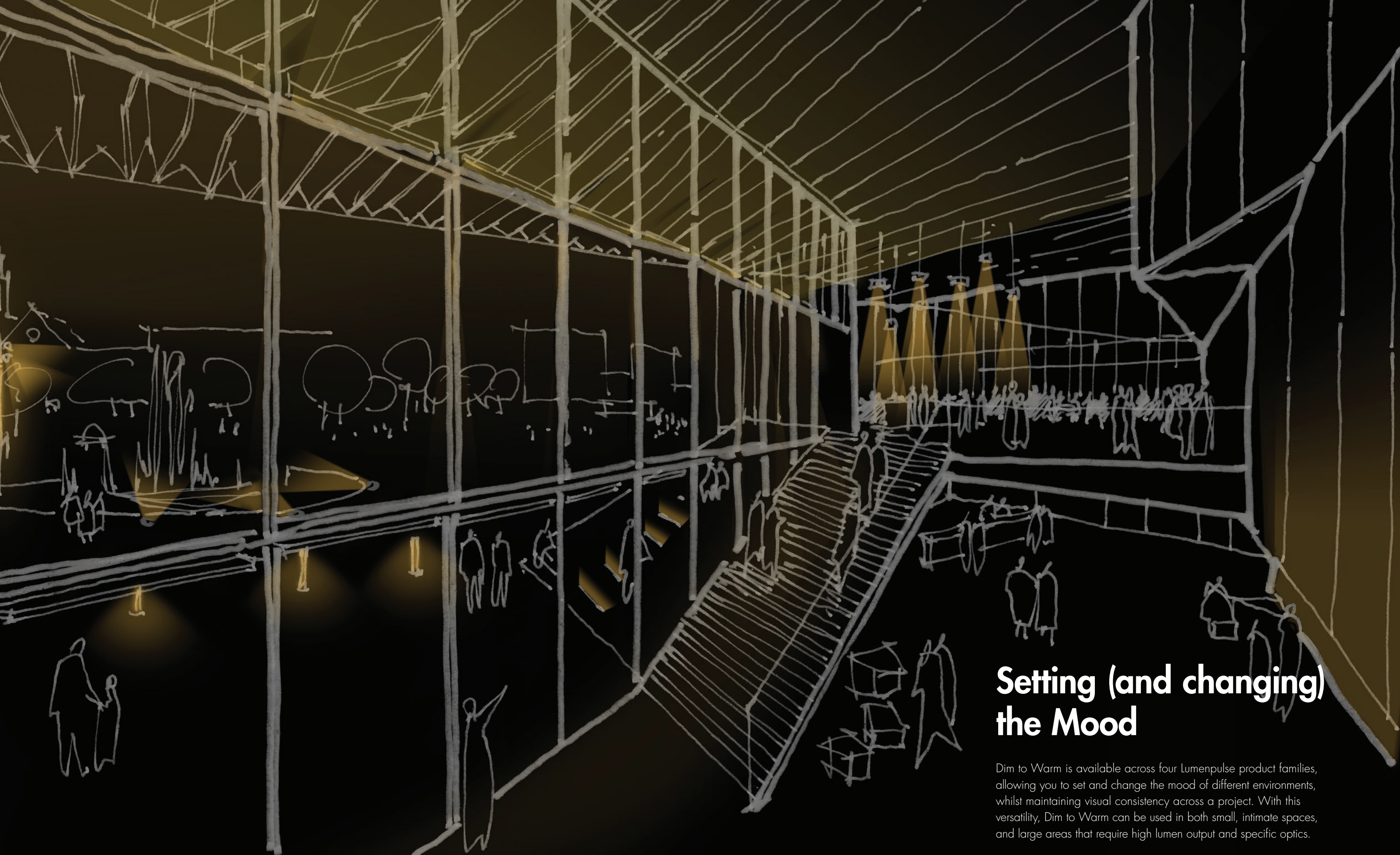
Define the Experience

Dim to Warm can have a transformative effect on multi-use spaces, including leisure centres, concert halls, theatres and conference centres. By allowing easy transitions between warm colour temperatures, the technology lets venues adjust the look and mood of their space, at any time and for any activity.

Baby, it's Warm Outside

Dim to Warm gives all manner of outdoor applications a warm, inviting ambience, which can then be changed, as needed – from dusk to dawn.



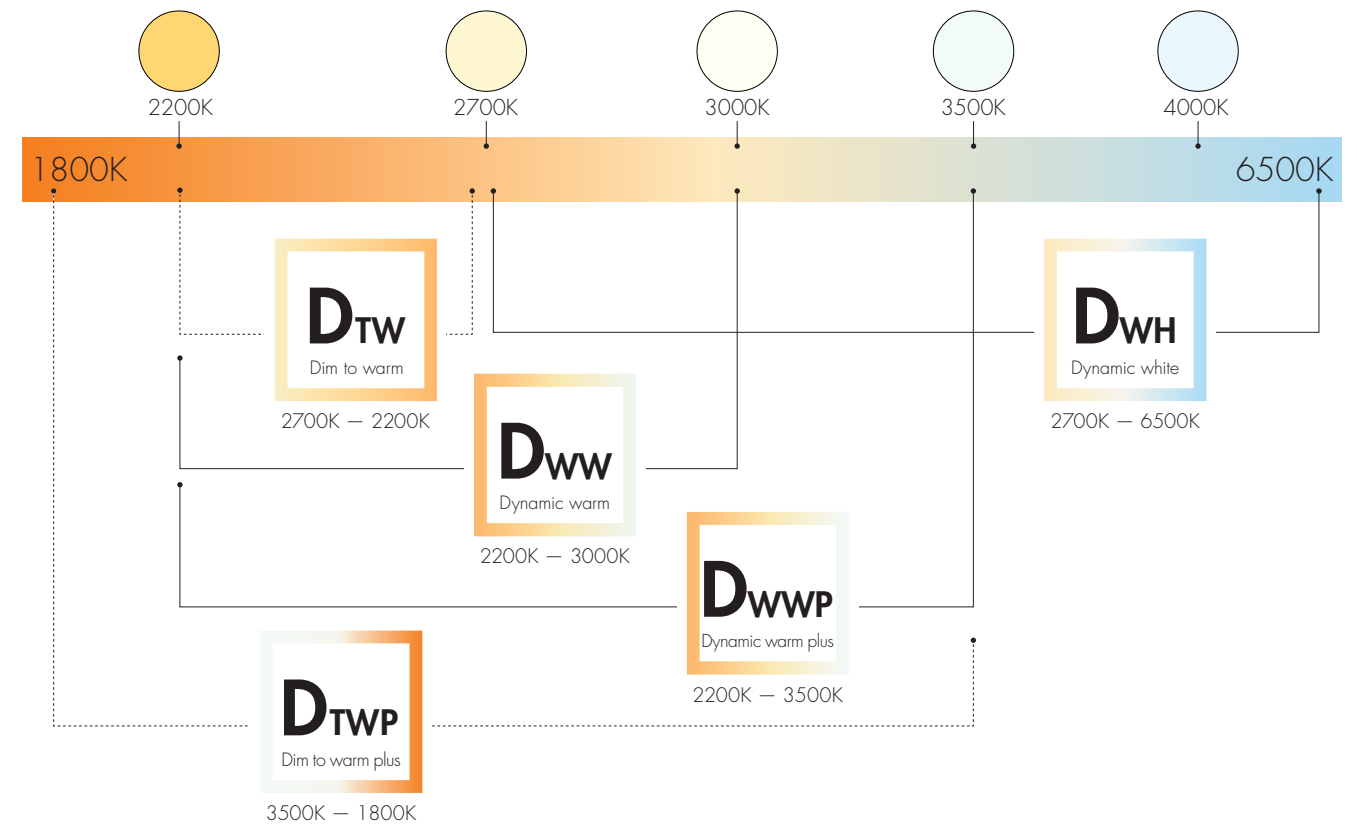


Setting (and changing) the Mood

Dim to Warm is available across four Lumenpulse product families, allowing you to set and change the mood of different environments, whilst maintaining visual consistency across a project. With this versatility, Dim to Warm can be used in both small, intimate spaces, and large areas that require high lumen output and specific optics.

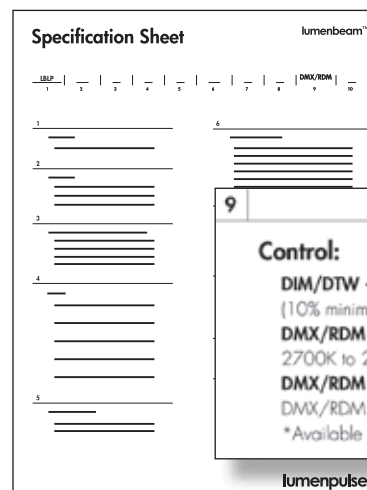


Ambience at your fingertips



Make it Warm

Lumenpulse's Dim to Warm technology is available across four families of luminaires as part of the Dynamic Warm colour option, ensuring you can stay warm in any environment, and with any application.



Control:

- DIM/DTW** - Dim to Warm via 0-10V, 2700K to 2200K (10% minimum dimming value)*
- DMX/RDM1** - Dim to Warm via single-channel DMX/RDM, 2700K to 2200K (1% minimum dimming value)*
- DMX/RDM** - 3-channel color temperature control via DMX/RDM

*Available for DWW version only.



2700K - 2200K

Dim to Warm reduces a luminaire's colour temperature when dimming, allowing for the natural dimming of warm white light.



2700K - 6500K

Dynamic White is a tunable white, that lets you use your lighting controls to create a scenario that coincides with the rhythmic changes of the natural environment.



2200K - 3500K

Dynamic Warm White Plus allows for variations at the warmer end of the spectrum without any loss in the luminaire's output or intensity.



3500K - 1800K

Dim to Warm Plus reduces a luminaire's colour temperature when dimming, allowing for smooth variations in warm white light.



2200K - 3000K

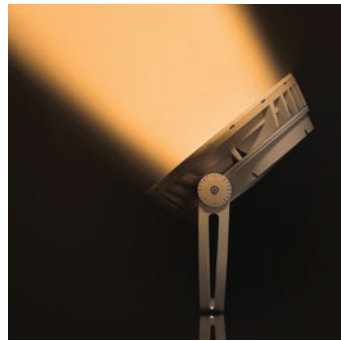
Dynamic Warm White allows variations at the warmer end of the spectrum. Projects no longer have to settle for a static colour temperature.

..... 1 channel (DTW - DTWP)
Compatible with: 1-10V, DMX/RDM, Lumentalk, DALI, SDAI, DALI T8

— 2 channels (DWH, DWW, DWWP)
Compatible with: DMX/RDM, Lumentalk, DALI, SDAI, DALI T8

Can be field-changeable via RDM & LT to 3 channels for individual CCT control.

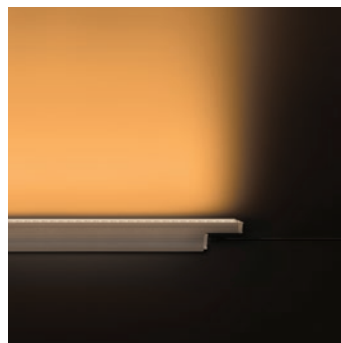
Dim to Warm is Available with:



Lumenbeam™ Family



Lumenquad™ Family



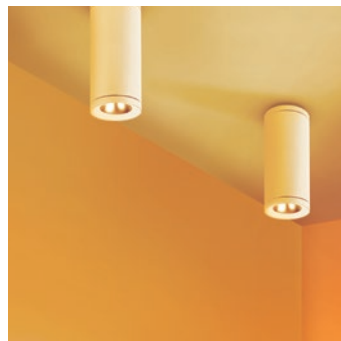
Lumenfacade™ Family



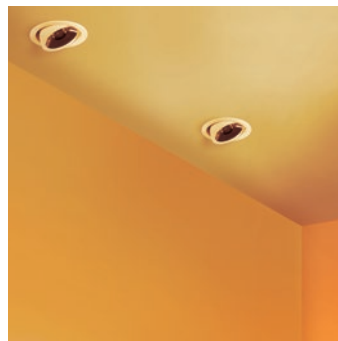
Lumenfacade™ Nano Family



Lumencove™ Family



Cylinder™ Family

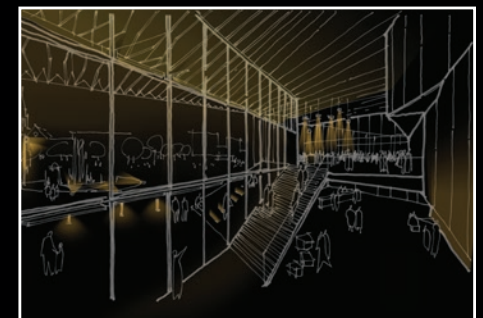


Downlight™ Family



Spotlight™ Family

NOTE: Some exceptions, consult specification sheets for details.



The architectural sketch in this catalogue has been provided by lighting designer Conor Sampson, principal at CS Design. The sketch is based on the work of the architectural firm Atelier TAG and JLP Architects.

In lieu of payment, Mr. Sampson has asked for a donation to The Canadian Women's Foundation.

Conor Sampson, OAQ, RAIC, IESNA, MALD

CS Design

Sales Offices and Manufacturing Facilities

Corporate Headquarters

1220 Marie-Victorin Blvd.
Longueuil, QC
J4G 2H9 Canada

T +1.877.937.3003
T +1.514.937.3003
F +1.514.937.6289

Paris, France

19 Vivienne
75002 Paris
France

T +33 (0)1 40 41 60 10

Manchester, United Kingdom

4th Avenue, The Village
Trafford Park, Manchester
M17 1DB United Kingdom

T +44 (0) 161 872 6868
F +44 (0) 161 872 6869

Florence, Italy

Via della Chiesa, 38
50041 Calenzano
Firenze - Italy

T +39 055 541754
F +39 055 541757 5

SE Asia Partner

25 Tagore Lane, #03-10
Singapore Godown
787602 Singapore

T +65 6453 1978

