

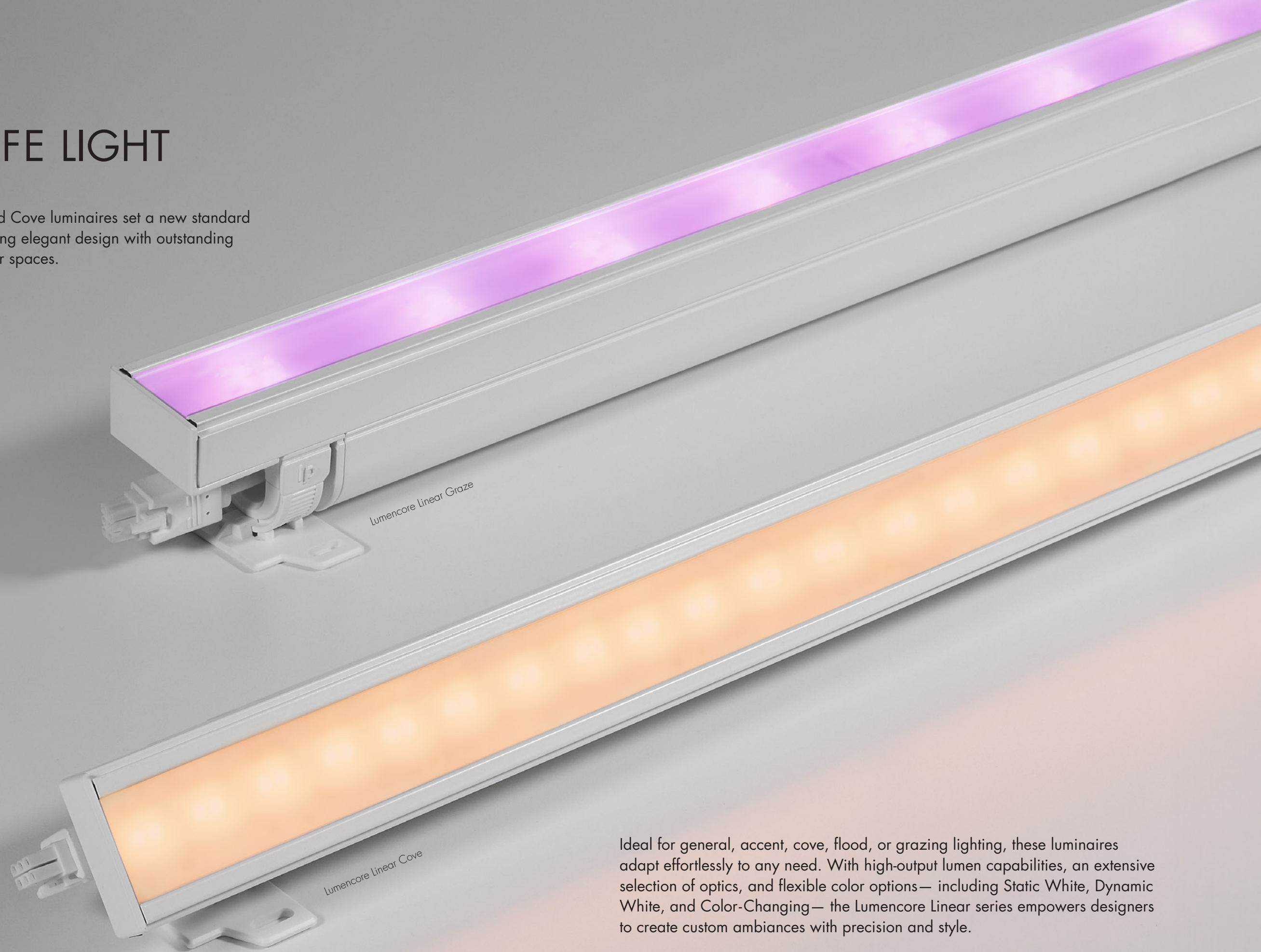
lumenpulse™



lumencore linear
True to Life Light

TRUE TO LIFE LIGHT

The Lumencore Linear Graze and Cove luminaires set a new standard in architectural lighting, combining elegant design with outstanding performance to transform interior spaces.



Ideal for general, accent, cove, flood, or grazing lighting, these luminaires adapt effortlessly to any need. With high-output lumen capabilities, an extensive selection of optics, and flexible color options— including Static White, Dynamic White, and Color-Changing— the Lumencore Linear series empowers designers to create custom ambiances with precision and style.

UNCOMPROMISING LIGHT

Designed to meet the demands of modern spaces, Lumencore Linear Graze and Cove luminaires deliver Lumenpulse's renowned quality of light, featuring high CRI and R9 values for bright and beautiful, evenly lit environments.

Their sleek design integrates seamlessly into tight spaces, enhancing the aesthetics of any setting. With toolless adjustments and snap-on accessories, setup is quick and effortless.

These luminaires not only elevate architectural beauty but also foster environments where people feel comfortable and energized.



Cove Static White

Cove Dynamic White

Cove Color Changing



Graze Static White

Graze Dynamic White

Graze Color Changing



Lumencore Linear Graze 10°x30°
Lumencore Linear Cove 120°x120° Clear





120° x 120° Clear



120° x 120° Frosted



Asymmetric

SUBTLY BRILLIANT:
ILLUMINATE FROM WITHIN

METICULOUS AMBIANCE

Cove lighting is a fundamental element in architecture, adding visual interest and indirect ambient illumination - ideal for spaces with limited natural light, such as corridors, malls, casinos, and hospitals.

The Lumencore Linear Cove features versatile distribution options and high lumen output in a sleek design for seamless integration. Its ability to work with curved cove details elevates architecture while effectively illuminating large areas, resulting in a bright, daylight-like ambiance.

PERFORMANCE

Up to **1569 lm/ft**

LCV 120°x120° CL 13W

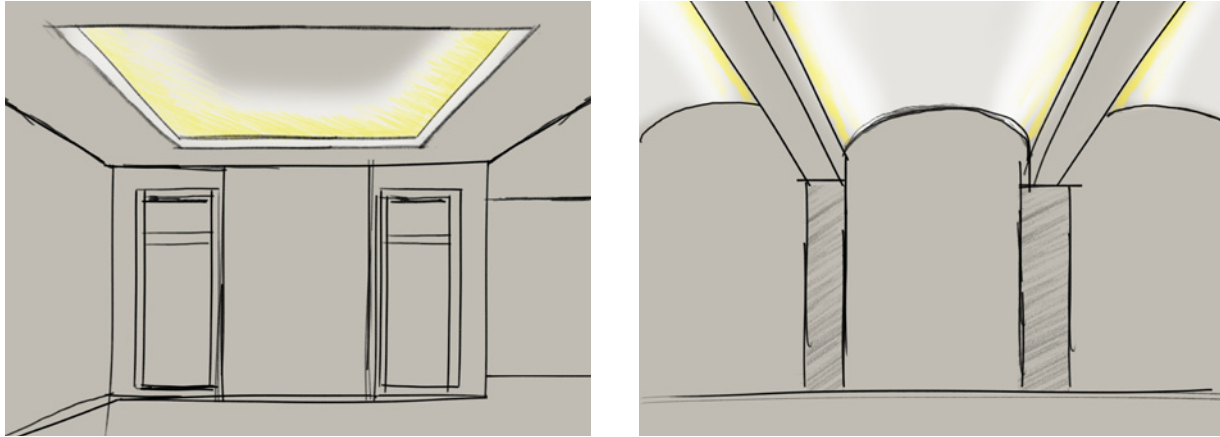
Up to **126 lm/w**

LCV 120°x120° CL 7W



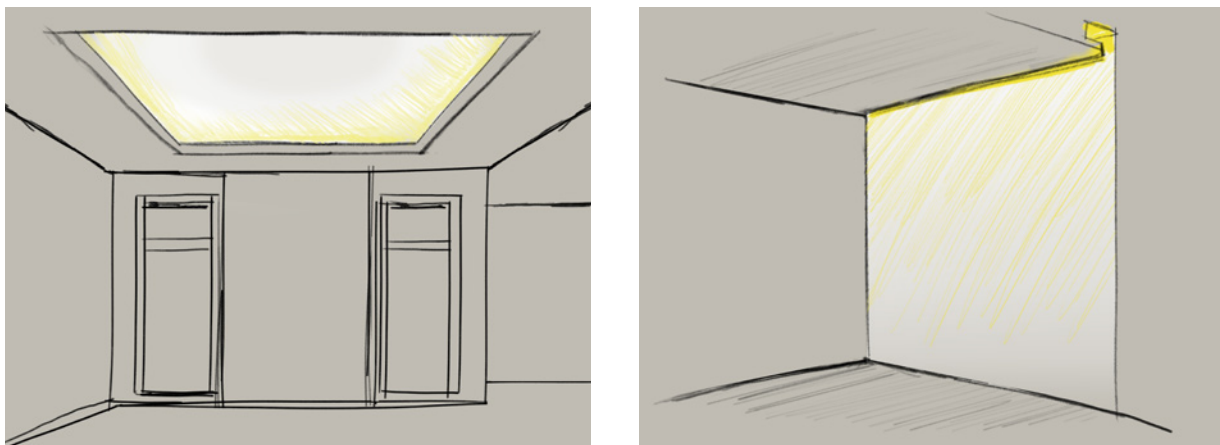
Lumencore Linear Cove Applications

120°x 120° CLEAR / FROSTED



Designed for standard cove applications, this distribution provides even illumination, highlighting architectural features and enhancing ambiance. Suitable for commercial, residential, and hospitality settings, it blends effortlessly into any space, delivering reliable performance and a refined, discreet aesthetic.

ASYMMETRIC



Designed to project light outward from the cove, the Asymmetric distribution enhances uniformity by pushing light well beyond the cove pocket. This creates a more even illumination, perfect for achieving striking floating ceiling or floating wall effects, where the light appears to softly lift surfaces, adding depth and visual intrigue to architectural spaces. Ideal for modern designs that require both subtle elegance and impactful lighting solutions.



Lumencore Linear Cove Asymmetric



TRUE ASYMMETRIC

Discover the versatility of our true asymmetric distribution in cove lighting. This design option evenly spreads light across the ceiling, directing more illumination toward the center of the space. While a symmetrical cove distribution is ideal for creating a bold accent, the asymmetric approach enhances uniformity and increases the perception of brightness, resulting in a warm and inviting atmosphere.

Whether you're aiming for striking accents or soothing uniformity, our cove lighting options provide the flexibility to achieve your desired ambiance.

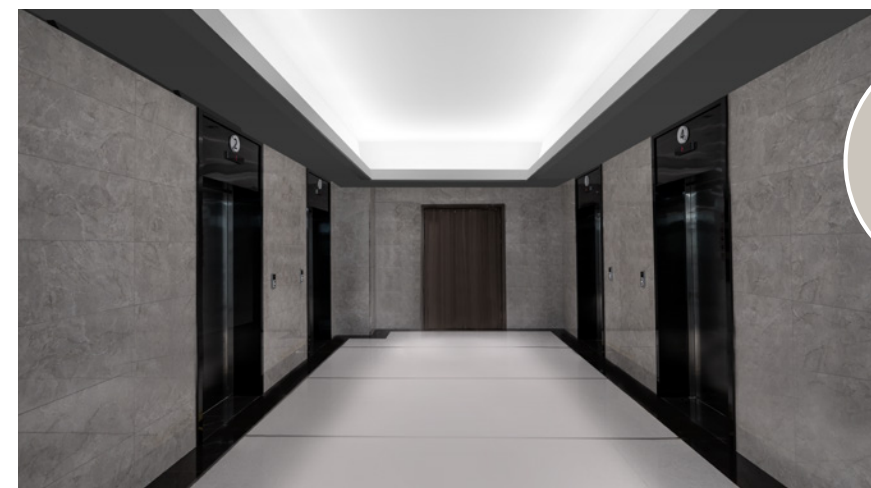
CLEAR OPTIC



Ceiling Illuminance
Avg: 81.87 Fc
Max/Min: 7.02

Floor Illuminance
Avg: 23.63 Fc
Max/Min: 2.48

ASYMMETRIC OPTIC



Max/Min:
3.75

Ceiling Illuminance
Avg: 72.03 Fc
Max/Min: 3.75

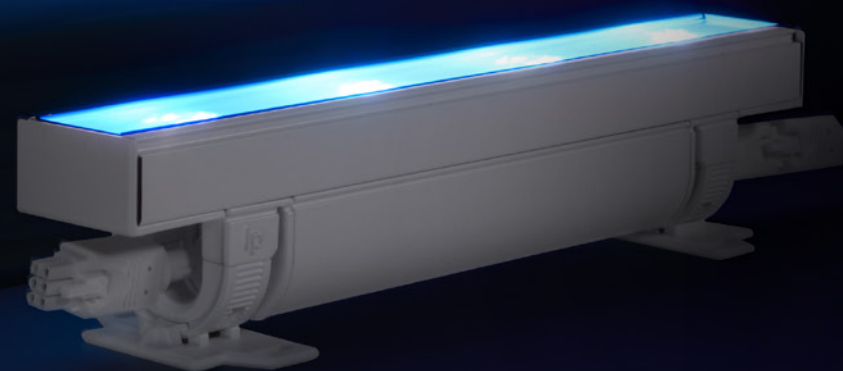
Floor Illuminance
Avg: 18.59 Fc
Max/Min: 2.37

GRAZE WITH GRACE

The Lumencore Linear Graze is a true designer's tool, equipped with nine distinct optical distributions that empower you to tackle a wide range of architectural lighting challenges. From grazing walls with striking texture to backlighting translucent materials, this versatile luminaire adapts to various needs, allowing for:

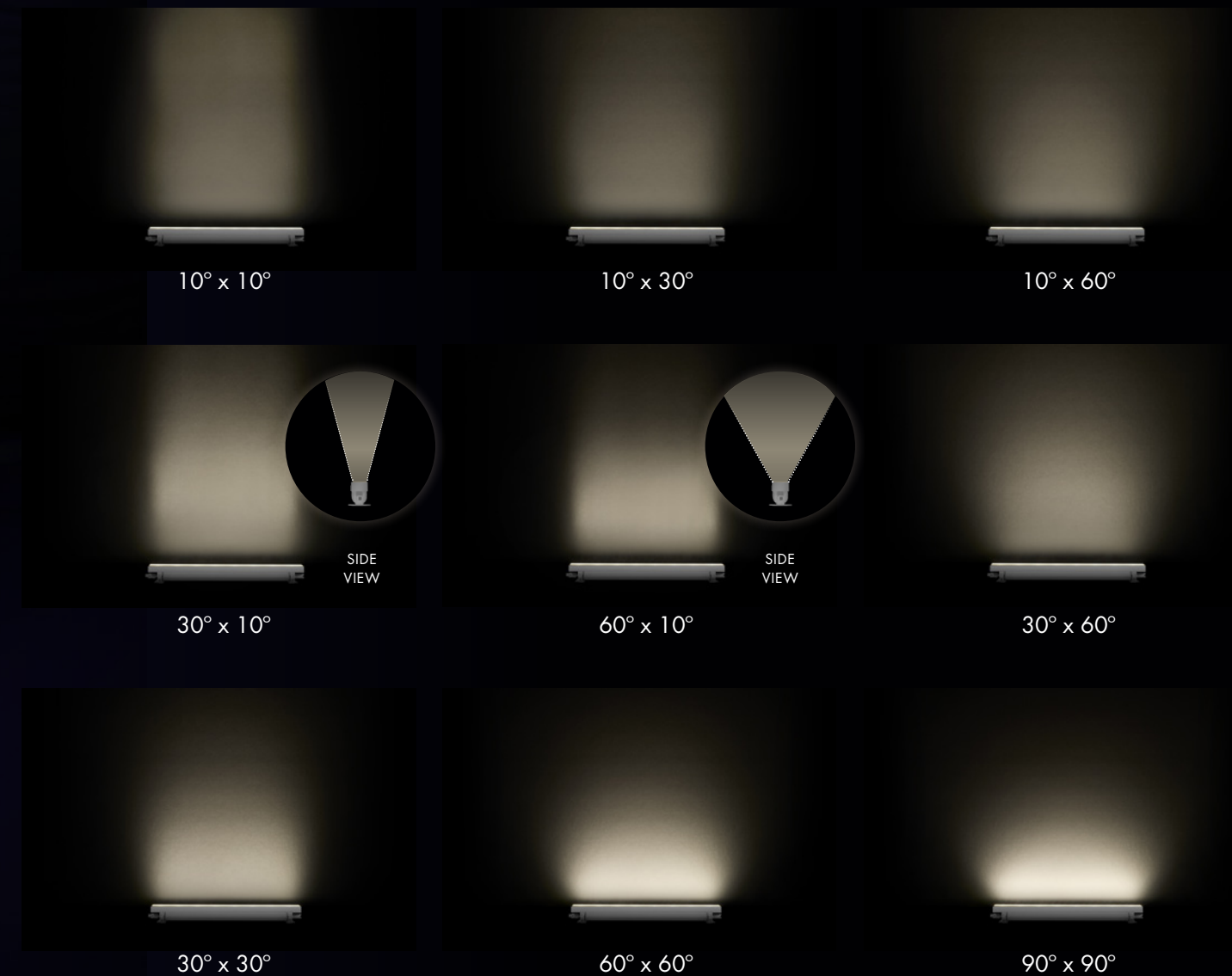
- Grazing walls, even in double-height ceilings;
- Backlighting behind semi-opaque materials;
- Uplighting vaulted ceilings to enhance architectural grandeur;
- Accent or spot lighting for focal points.

CONSISTENT
COLOR
BALANCING



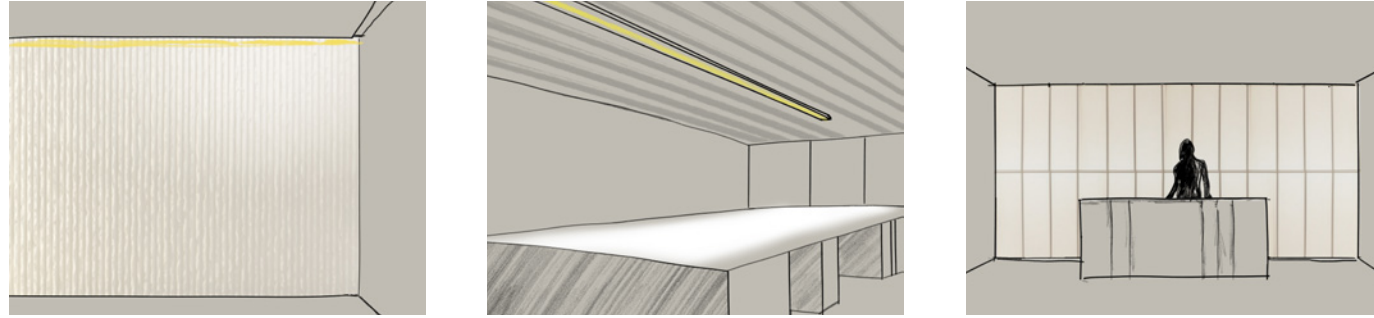
ABUNDANCE OF APPLICATIONS

High Lumen Output for Grazing or Flooding



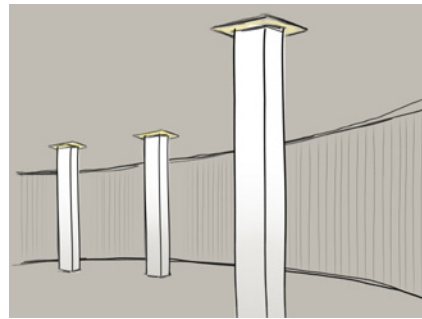
Lumencore Linear Graze Applications

10°x30° / 10°x60°

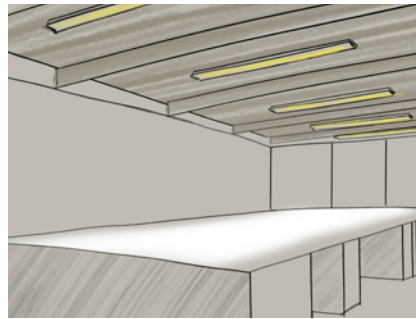


These optical distributions provide targeted lighting to enhance architectural features while allowing versatile applications such as grazing, accenting, and backlighting, minimizing light spill and supporting flexible integration into various architectural styles for customized lighting solutions.

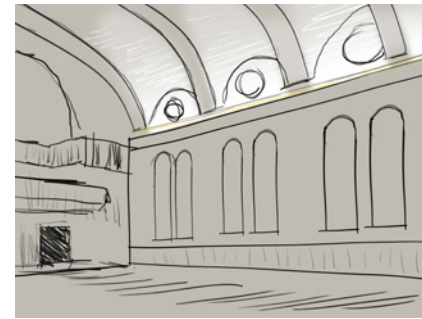
10°x10°



30°x10° / 60°x10°



30°x60°



These optical distributions are essential for architectural lighting design, offering precise targeting and ambient enhancement, particularly effective for vaulted ceilings, enabling tailored solutions that elevate functionality and aesthetics.

30°x30° / 60°x60° / 90°x90°



These optical distributions are invaluable for architectural lighting design, offering wide-area illumination and uniform flooding that enhances ambiance and ensures consistent light coverage in large spaces.



Lumencore Linear Graze 30°x10°
Lumencore Linear Graze 30°x60°



TOP-TIER STATIC WHITE

In today's architectural landscape, high-quality lighting is essential for well-being and achieving WELL building certification. The Lumencore Linear in static white offers exceptional performance with a CRI of 90+ and R9 values over 50, ensuring vibrant, true-to-life colors. Its high efficacy and illumination levels reduce operational costs while providing effective lighting. With no perceptible flicker and smooth dimming, this fixture minimizes eye strain and enhances comfort. SDCM within one step guarantees consistent color quality across luminaires, making the Lumencore Linear a reliable choice for modern designs that prioritize aesthetics and occupant well-being.

A Standout Static White

- CRI 90+: Ensures excellent color rendering for true-to-life visual quality.
- R9 Values Above 50: Provides richer reds for enhanced color quality.
- High Efficacy (lm/ft): Maximizes energy efficiency for lower operational costs.
- Output (126 lm/W Efficiency): Delivers significant illumination levels for effective lighting.
- Low Flicker Rate: Minimizes eye strain and enhances visual comfort.
- Smooth Dimming (0.1%): Offers gradual light adjustment down to low levels without flicker.
- 1 SDCM: Unmatched consistent color quality across luminaires.
- WELL Standards: A number of Lumencore Linear configurations conform to WELL standards for increased wellness.





VIBRANT, DYNAMIC COLOR CHANGING and High-Quality White

The Lumencore Linear Graze and Cove Color Changing fixtures, powered by Optidrive, deliver remarkable richness and saturation to interiors. With advanced calibration, they offer millions of vibrant colors and high-quality whites, ensuring precise intensity and seamless blending that enhances architectural features. This two-in-one solution enables designers to focus on functional white light without sacrificing quality while incorporating color as a decorative element for after-hours use. The Lumencore Linear Graze fixtures use Opticolor technology to showcase color. It is a powerful tool for impactful lighting and ideal for projecting brand identity and enhancing nighttime presence.

Color Your Way

- Versatile Color Options: RGB, RGBW30K, RGBW40K, and RGBA configurations to meet diverse lighting needs.
- Tailored RGBW Recipes: A unique offering of distinctive RGBW recipes as a standard feature.
- Consistent Color Points: Maintains exceptional consistency across our entire product line, ensuring clients receive the high-quality color performance they've come to expect from Lumenpulse.



Lumencore Linear Graze 30°x30°





Lumencore Linear Graze 10°x30°
Lumencore Linear Cove Asymmetric



A MORE DYNAMIC WHITE

A new approach to Dynamic White lighting offers full light output across all color temperatures. Utilizing Lumenpulse's proprietary technologies, Optiwhite+ and Optidrive, these fixtures achieve a high CRI (90+) and R9 values, ensuring a more natural Dynamic White. This advanced system mimics natural daylight, creating smooth transitions between light intensities.

Consistent Quality

Optiwhite+ enhances lighting quality with a high melanopic effect while maintaining CRI and R9 levels, ensuring a perfect balance of aesthetics and performance. Whether at a warm 1800K or a cool 6500K, the CRI remains at 90, and the R9 stays above 50 between 2700K and 6500K. Additionally, Optiwhite+ introduces pastel tones for delicate color applications.



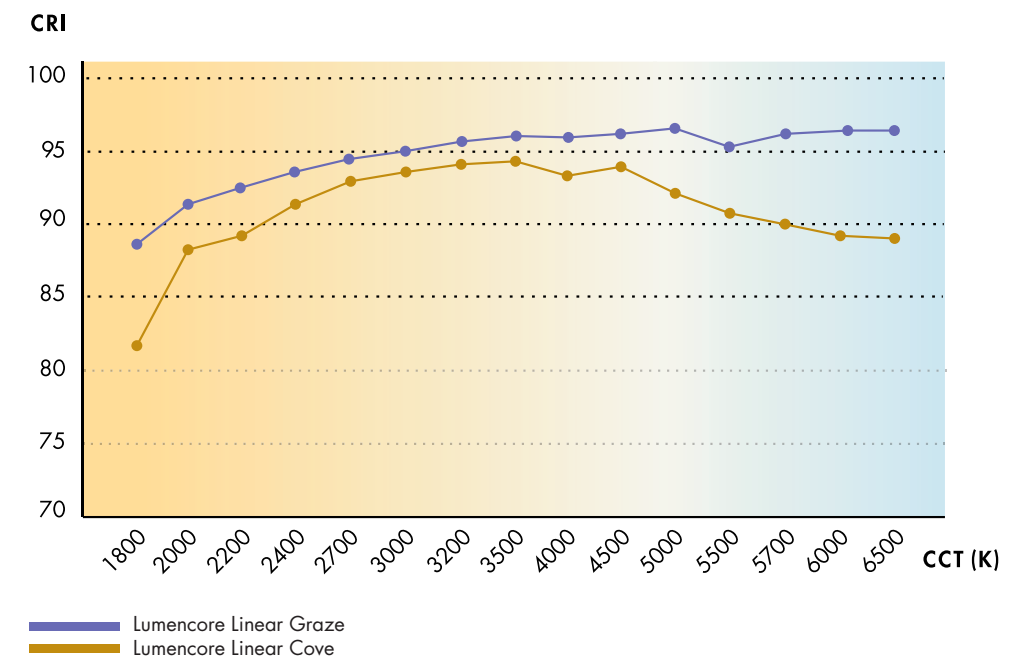


UNCOMPROMISING LIGHT QUALITY

for Enhanced Wellness

We designed these fixtures with a focus on enhancing wellness and supporting well-being in various environments. Our luminaires feature high melanopic options for circadian-inspired lighting, crucial for achieving WELL certification. Equipped with high-performance drivers, they reduce flicker, minimizing potential health issues like headaches and eye strain. These fixtures ensure unmatched quality with smooth dimming and comply with WELL standards.

High CRI across all color temperatures guarantees true-to-life color rendering, while enhanced R9 values offer richer reds for superior light quality. Tunable white options maintain high CRI and output, supporting circadian rhythms in line with WELL building standards.





EXCEPTIONAL COLOR ACCURACY

with Smooth Dimming

Our advanced dimming technology enables smooth dimming down to 0.1%, allowing precise control over lighting intensity without flicker or abrupt transitions. This is achieved through our high-performance power supply and driver system, which optimizes drive current to ensure each fixture delivers the required power even at low settings, providing exceptional flexibility and consistency.

Lumencore Linear fixtures showcase high CRI and enhanced R9 values for rich, true-to-life color rendering, ensuring vibrant and natural colors and skin tones, creating an inviting and visually comfortable environment.



Lumencore Linear Graze 10° x 30°
Lumencore Linear Cove 120° x 120° Frosted

PRECISION TOOLS

For Perfect Illumination

The Lumencore Linear Cove and Graze luminaires feature precision-engineered accessories designed to significantly reduce glare and optimize visual comfort. These accessories are perfect for environments that require sharp focus and clarity, such as offices, conference rooms, clinics, and other spaces with screens where precise glare control is essential.

By minimizing glare with exacting precision, these accessories create a more comfortable and productive atmosphere, delivering functional yet visually soothing lighting. The result is smooth, uniform illumination that enhances concentration and reduces eye strain, making them the ideal choice for task-oriented environments.

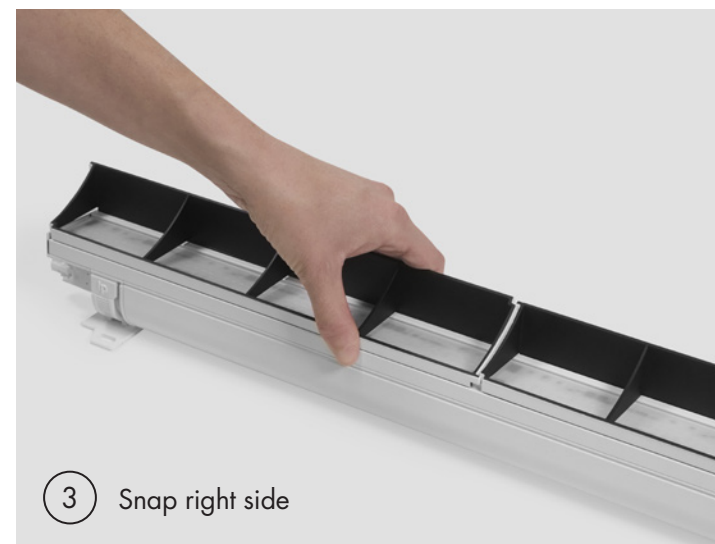




120°

Tool-Free Accessories

The tool-free approach means snap-on optical accessories allow for quick and easy setup, reducing on-site time and effort. Whether mounting on walls or ceilings, the toolless design and easy angle adjustment ensures contractors can position the luminaires without the need for specialized tools.



ENGINEERED FOR EASE

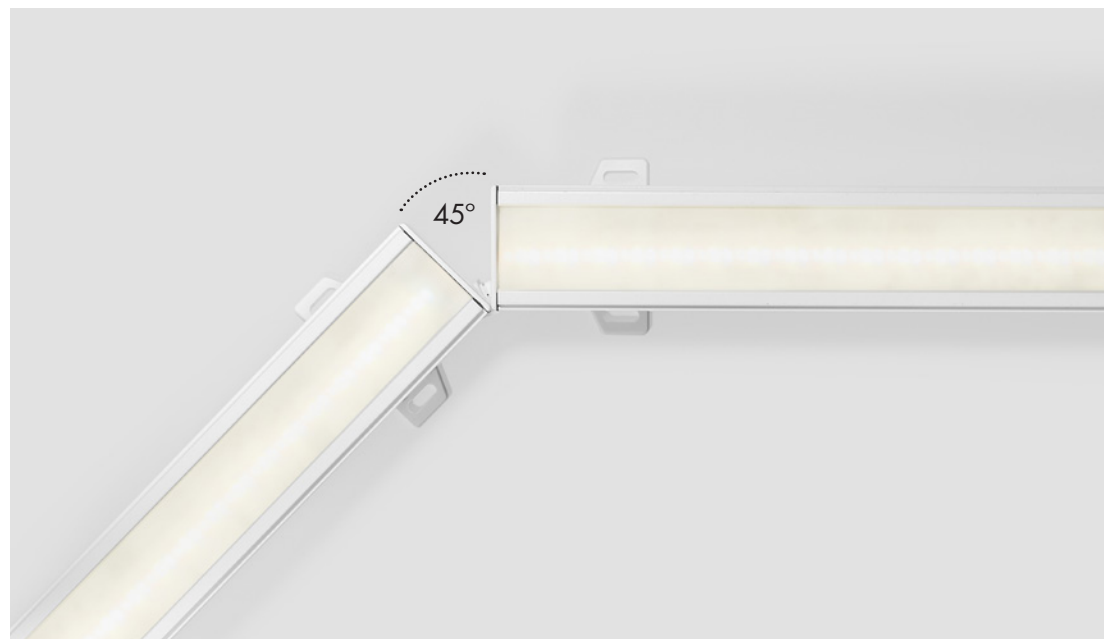
Designed to Thrive in Any On-Site Conditions

At Lumenpulse, we focus on enhancing the installation experience through thoughtfully designed mountings and connections. Our continuous tool-free adjustment allows for easy positioning, while wall mount brackets feature integrated cable management for a neat setup. We've developed an alignment Track for seamless cove installations, and our luminaires come with quick-connect plug-and-play cables for effortless connections. An optional Wiring Compartment adds convenience, simplifying the installation process while ensuring high performance and aesthetics.



SEAMLESS INTEGRATION

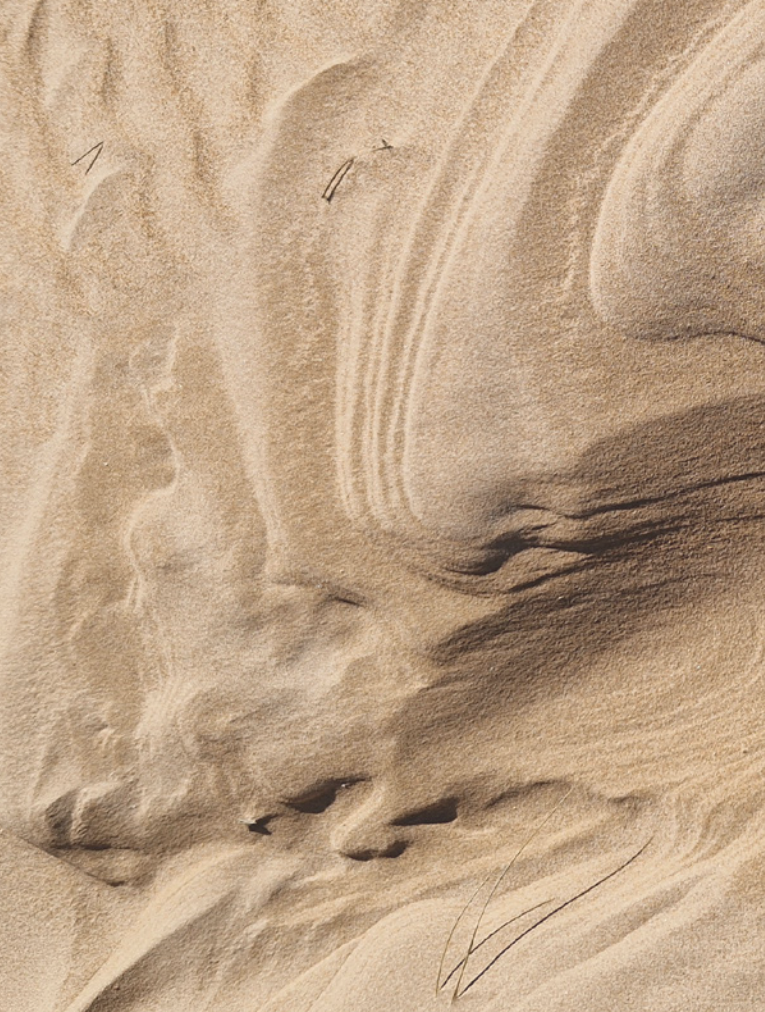
The Lumencore Linear Cove and Graze luminaires ensure seamless end-to-end connections, creating a continuous line of light without shadows. This effect is achieved through the precise spacing of diodes and optics, along with a slim encapsulation that prevents shadows. Designed for architectural flexibility, these fixtures can connect at angles up to 45 degrees, allowing for smooth integration into complex spaces, from wrapping around columns to fitting into curves. This versatility makes them an exceptional choice for both curved and straight-edge features, delivering outstanding performance in any environment.



Create flawless lines of light with no evidence of joints or shadows.



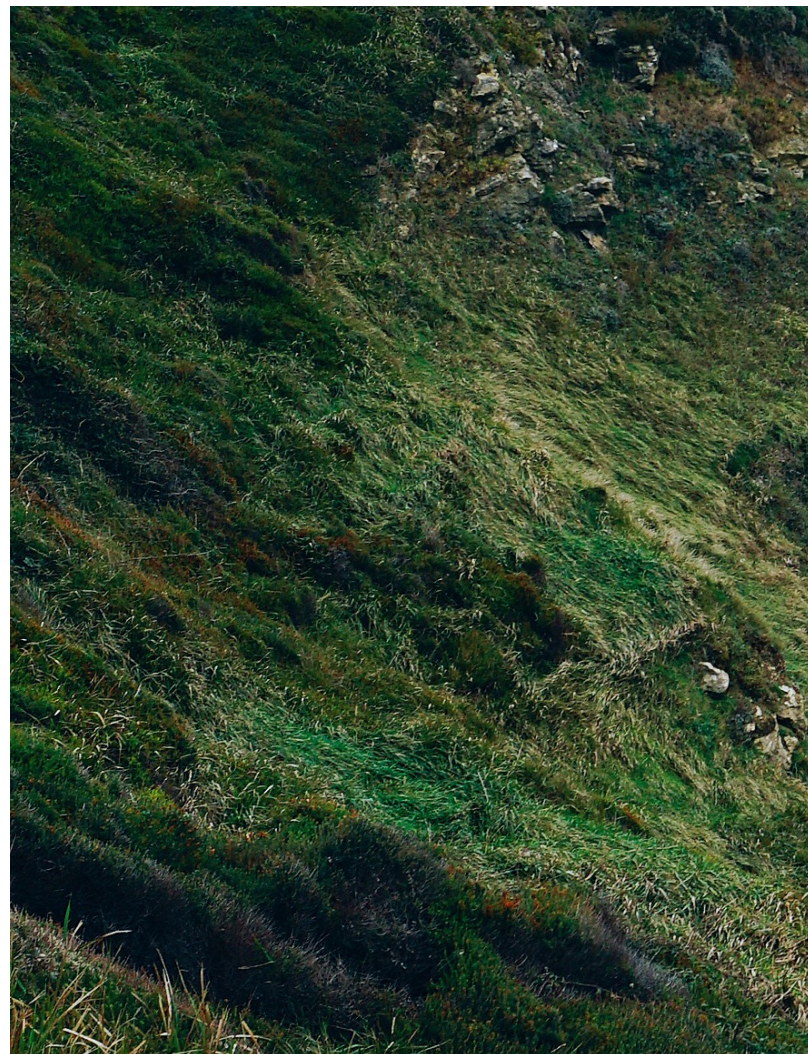




LIGHTING THE FUTURE RESPONSIBLY

With an impressive lifetime and high efficacy, the Lumencore Linear family is designed for longevity and energy efficiency, reducing the overall environmental footprint. The precision of their optical distributions ensures that light is directed exactly where it's needed, minimizing waste and unnecessary light spillage.

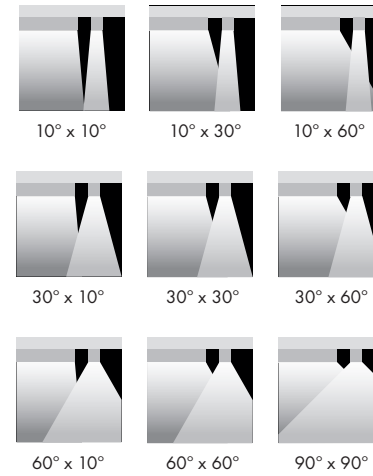
These fixtures are also serviceable, with replaceable parts that extend their lifespan, reducing the need for replacements and further conserving resources. In line with our commitment to reducing environmental impact, the packaging has minimal plastic and is otherwise fully recyclable, featuring QR code installation instructions for a more paperless, streamlined setup. By embracing dematerialization and efficiency, the Lumencore Linear family offers a forward-thinking approach to sustainable lighting.



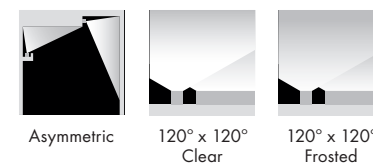
A CRAYON BOX OF OPTIONS



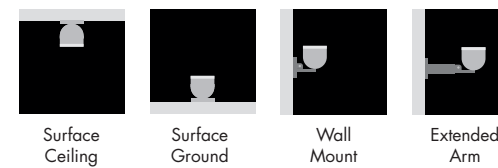
Lumencore Linear Graze Optics



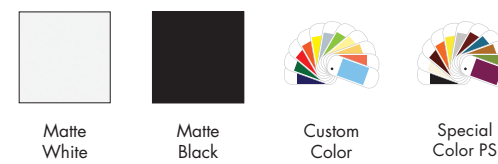
Lumencore Linear Cove Optics



Mountings



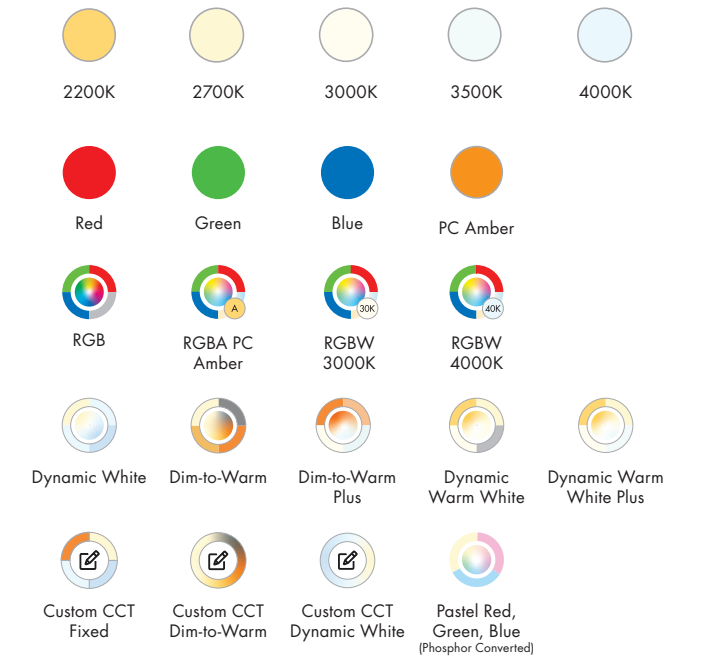
Finishes



Lengths



Color Temperatures



NOTE: Dynamic White and Color Changing models of Lumencore Linear Graze feature Opticolor™. Dynamic White, Dim-to-Warm, and Dynamic Pastel models of Lumencore Linear Cove feature Optiwhite+™. Both fixtures are equipped with Optidrive™ in most configurations.

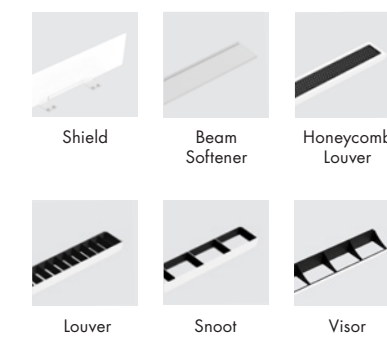
Wattages

4W/ft | 7W/ft | 10W/ft | 13W/ft

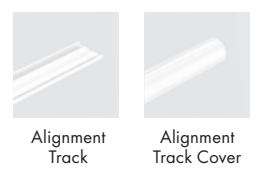
Controls

ON/OFF | 0-10V | DMX/RDM | DALI

Optical Accessories



Installation Accessories



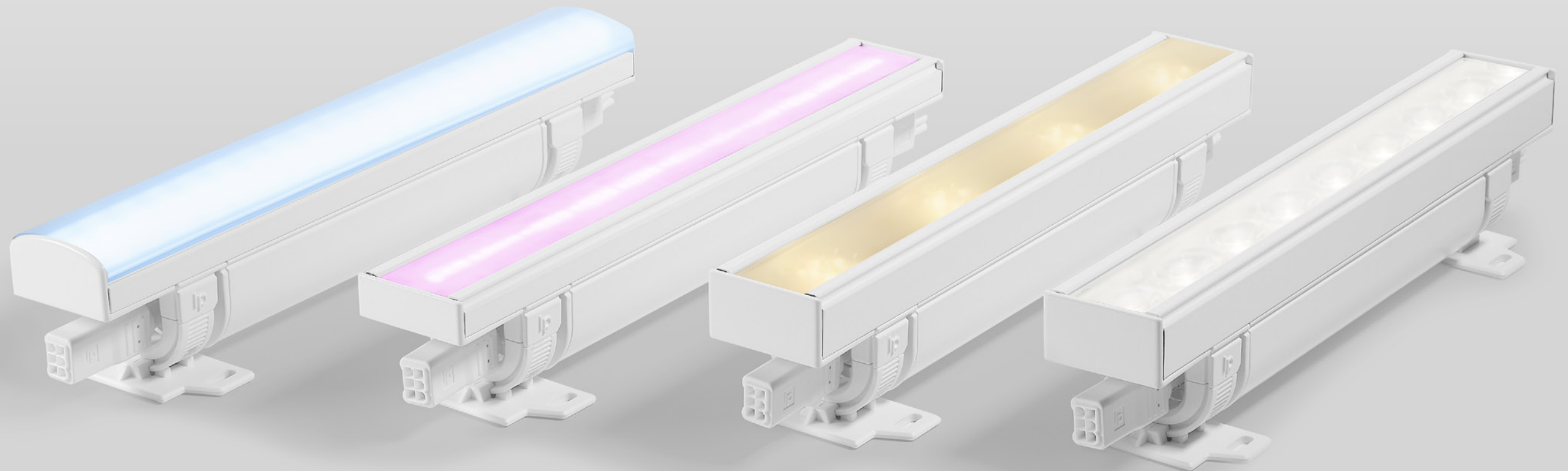
Certifications



NOTE: Some exceptions, consult Specification Sheets for details.

SIX SOLUTION TAKEAWAYS

1. Uncompromising Light Quality: High CRI, enhanced R9, tunable white, and true-to-life color rendering helps achieve your wellness goals.
2. Seamless Illumination: Continuous lines, smooth dimming, and optimized optics for visual comfort and no shadows.
3. Tunable and Dynamic: Have it all with Dynamic White powered by Optiwhite+ and RGBW with Opticolor for vibrant colors, high-quality white, and flexible design possibilities.
4. Design Flexibility: Extensive optical choices, including asymmetrical cove optics, support creative freedom and diverse applications.
5. Performance & Efficiency: High output, up to 126 lm/W efficacy, and extended lifetime for reliable, energy-efficient lighting.
6. Circadian Support: A range of options for melanopic contribution, promoting occupant well-being and meeting WELL standards.



Corporate Headquarters

1220 Marie-Victorin Blvd.
Longueuil, QC
J4G 2H9 Canada

T +1.877.937.3003
T +1.514.937.3003
F +1.514.937.6289

US Headquarters

14 Beacon Street, 3rd Floor
Boston, MA
02108 United States

T +1.877.937.3003
T +1.617.307.5700
F +1.617.350.9912

